

When will the Ministry Contribution be due?
There are two options. First, payment in full by the end of March. Second, a monthly direct debit over 10 months.

What period will be used to calculate the churches income? Income will be based on the church's last completed financial year.

Are fellowships included? Yes, all churches and fellowships will be asked to contribute.

What is currently the recommended annual stipend? For 2008 the recommended stipend is \$58,292. This amount will increase for 2009.

Will the stipend and \$35,000 be indexed?
Yes, each year these two amounts will be indexed by the same increase to a recommended pastor's stipend.

If you have any questions, or to discuss your church's contribution, please contact:



Baptist Union of Victoria

Jon Price, Finance Manager
Level 1 / 1193 Toorak Road
Camberwell Vic 3124
PO Box 377 Hawthorn Vic 3122
Phone: (03) 9880 6177
Fax: (03) 9880 6123
jon.price@buv.com.au
www.buv.com.au

We will enhance our relationship together by working together on specific projects to expand and develop our work in the state.*

Each year we will provide a range of projects that churches could support in addition to the ministry contribution. Involvement is voluntary.

Projects would be of different value (\$50 - \$10,000).

Projects could come from any of the following areas of our work:

- Mentoring Training
- Rural Training and Support
- Church Planting
- Internships
- Urban Summer
- Deeper
- Multicultural Ministry
- Children's Ministries
- Indigenous Ministries
- Public Issues

In addition to this we would seek churches' support for us through:

- Enlisting as prayer supporters.
- Providing intentional volunteer workers to assist our work.

** Statements taken from Rev Alan Marr's plenary session at the October 2007 Gathering*



Ministry Contribution

We will enhance our relationship with the churches through a more equitable arrangement for financial support



We will enhance our relationship with the churches through a more equitable arrangement for financial support.*

Ministry Contribution from churches to contribute towards the work of the BUV will be based upon income instead of membership.

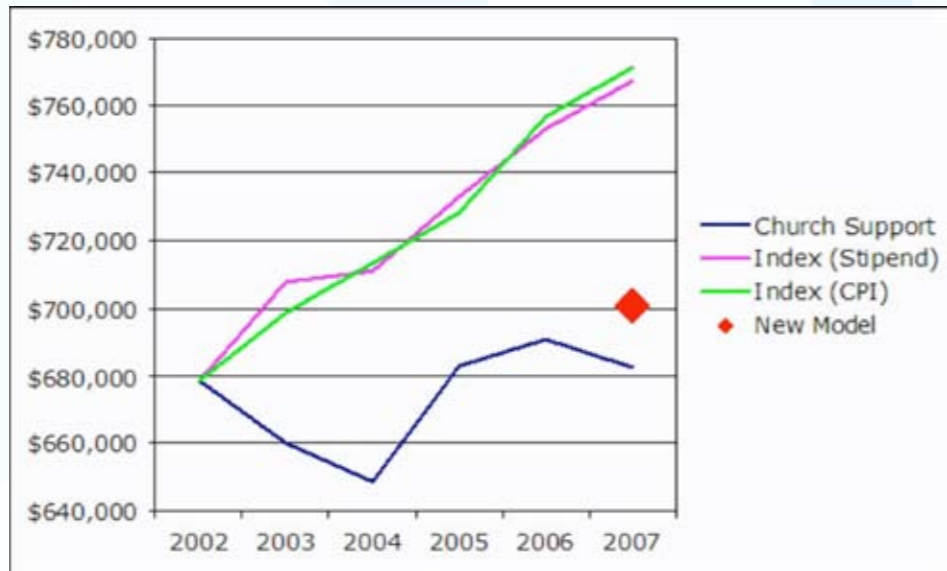
Ministry Contribution will be 2% of church income up to the recommended annual stipend rate and 3% for anything above to a cap of \$35,000.

The change will be effective for the 2009 year.

Why is it fairer?

- Membership is no longer an indication of congregational size. Income is a fairer means to estimate a church's capacity to support the wider Baptist family.
- It is fairer regardless of your demographic context. Some churches are in a stronger position to help others. Other congregations have a higher proportion of people on fixed incomes or students etc.
- It is fairer to the BUV – in real terms our support has decreased. This will ensure what we are able to provide will be dependant on the size and income of our churches as they rise and fall.

While some churches will be asked to provide a larger contribution than previously, as our total income received from churches will remain much the same, there will be many churches who will be asked for a lower contribution.



What will be included as income? All income designed to meet the churches operating budget.

Includes

- Offering – designated and undesignated.
- Missions – regular offering received for the ongoing support of missionaries (local and abroad) and mission agencies.
- Investment – interest, dividends, rent or the like received from investments (including rental of church manse).
- Facility Hire – income from hire of church facilities.
- "Business" Income – The surplus from any business (counselling, op-shop, book shop) that the church operates that is allocated to churches operating budget.
- Offerings to meet regular loan repayments (refer exclusions).

Excludes

- Building Program Appeals / Pledges – any non-regular offering that are designated to a building program and are banked into a separate building fund account or applied to a church building loan account.
- One off mission giving – eg May GIA appeal, Easter Crossover appeal, overseas aid project.
- BUV Grant.

FAQs

Does this replace the Fair Share? Yes, the Ministry Contribution will be the only payment we require. There will still be options for voluntary support (see back page).

When will this commence? The ministry contribution will be calculated on income for the first time in 2009 (the BUV now operates on a calendar year.)

How will it work? A form will be sent to Treasurers each January asking for total income and details of any income to be excluded. This will be signed and returned to the BUV together with a copy of the church's financial report. The BUV will calculate the ministry contribution and issue an invoice.

My church can't afford the extra amount? To help those churches for whom this will mean a significant increase, subsidies will be provided for the first two years on the amount above their 2008 Ministry Contribution:

% increase	Subsidy – Year 1	Subsidy – Year 2
80-100%	Up to 50%	Up to 25%
40-80%	Up to 40%	Up to 20%
20-40%	Up to 20%	Nil
0-20%	Nil	Nil

(Eg: Church X's ministry contribution in 2008 was \$1,000 and under the new model for 2009 was calculated at \$1,500, a \$500 or 50% increase; they would receive a subsidy of 40% or \$200 in Year 1 and 20% or \$100 in Year 2.)

